



**RELIANCE  
HOME**

*Built for Better Home*

2019 Product Catalog



## OPEN 7 DAYS

Showroom : (Except Headquarter Office)

Mon-Sat : 9:30am - 7:00pm

Sunday : 10:30am - 5:00pm

### HEAD QUARTERS

No. 3, Jalan Taming 2A,  
KWS. Perindustrian Taming Jaya,  
43300 Balakong, Malaysia.  
Tel : +603-8211 2082 (12 Lines)  
Fax : +603-8962 3688  
[www.reliancehome.com](http://www.reliancehome.com)  
[sales@reliancehome.com](mailto:sales@reliancehome.com)

### CHERAS

No. 62 Ground Floor,  
Jalan Cerdas, Taman Connaught,  
Cheras 56000 Kuala Lumpur.  
Tel : +603-9100 5094  
HP : +6012-622 6955  
[cheras@reliancehome.com](mailto:cheras@reliancehome.com)

### DAMANSARA UPTOWN

No. 98G, Jalan SS21/39,  
Damansara Utama,  
47400 Petaling Jaya, Selangor.  
Tel : +603-7729 3888  
HP : +6012-622 6598  
[damansara@reliancehome.com](mailto:damansara@reliancehome.com)

### PUCHONG

No. 9, Jalan Puteri 2/1,  
Bandar Puteri Puchong,  
47100 Puchong, Selangor.  
Tel : +603-8060 3885  
HP : +6012-622 6597  
[puchong@reliancehome.com](mailto:puchong@reliancehome.com)

**eSTORE**  
<http://reliancehome.com/shop/>

## THE LUXE CASEMENT WINDOW



### THE LUXE

#### MATERIAL SPECIFICATION

**Lock System :** MultiPoint Security Lock

**Glass Thickness :** 6.38 - 8.38mm

**Frame Color :** Dupont / Jotun Outdoor Coating

**Aluminum Extrusion Thickness :**  $\pm 1.8-2.00\text{mm}$







## THE PRESTIGE CASEMENT WINDOW



### THE PRESTIGE

#### MATERIAL SPECIFICATION

**Lock System :** MultiPoint Security Lock

**Glass Thickness :** 6.38 - 8.38mm

**Frame Color :** Dupont / Jotun Outdoor Coating

**Aluminum Extrusion Thickness :**  $\pm 1.8-2.00\text{mm}$



# THE PRESTIGE

CASEMENT WINDOW

## ABS Lock Handle



**Reliable** under heavy use

**Low-noise** function (silent pattern)

**Heavy duty** High Durability & Quality

## 4-Bar Hinge (Heavy Duty)



1. **SUS304 stainless** steel made.
2. **Water and Rust Proof.**
3. **Heavy Duty** and able to hold heavy windows.
4. Engineered to project the vent out as it pivots to avoid interference between a lipped vent and frame.
5. **High sustainability** to withstand strong wind or inverse force.



**Thick & Strong** (Aluminum Profile)



**Unobstructed view**



## Powder Coated Frame



Fluorocarbon chemistry technology

**Highest Color Retention**

**RUST PROOF** water repellent

**UV FILTERED** Protection

**VOC FREE** Paint powder

**ANTIDUST** surface easy for cleaning







## 3RD GENERATION INDUSTRIAL NYLON Bearing Roller

Multiple Lateral Locks against Intruders

Multiple Locking Points to keep the doors tight and secure

Smooth Chamfered deadbolts in lock cases

Reduce excessive noise and energy wastage

Excellent weather sealing for thermal insulation and energy economy

Resistant to lateral thrust forces



**Multipoint Lock**  
2 YEARS WARRANTY



**SAFETY** Anti Shattered

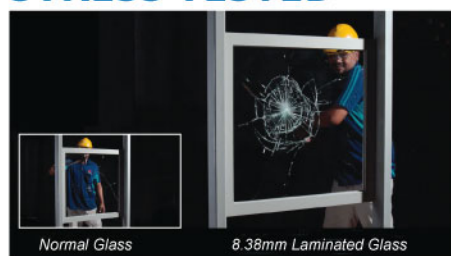
**SECURITY** 10X Stronger

**SOUND** Reduce 70% sound trans

**UV PROTECT** Filter more than 99% harmful UV rays



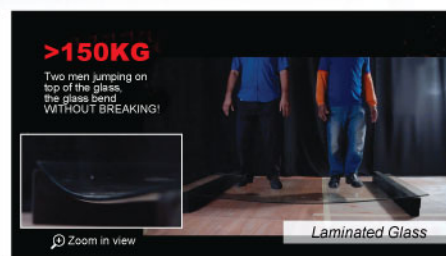
## STRESS TESTED



IMPACT STRESS TEST  
(Baseball Bat and Steel Hammer)



> 80KG Sandbag Stress Test



Glass Weight Sustainability STRESS TEST  
(performed by 2 person weighted more than 150KG)

\* Above three stress tests were performed at our factory, Balakong. Please visit our Youtube Channel to watch these videos.



# TOP HUNG WINDOW

## THE LUXE

### MATERIAL SPECIFICATION

**Lock System :** MultiPoint Security Lock

**Glass Thickness :** 6.38 - 8.38mm

**Frame Color :** Dupont / Jotun Outdoor Coating

**Aluminum Extrusion Thickness :**  $\pm 1.8$ -2.00mm



### | Multi Point Locking System |



Surface Finishes : Glossy Polish/Matt  
Material : SUS 304 Stainless Steel  
Function : Pivot Door  
(Outward)

### | Bar Hinge System |



Surface Finishes : Glossy Polish/Matt  
Material : SUS 304 Stainless Steel  
Function : Pivot Door  
(Outward)



# SLIDING WINDOW

## THE LUXE



Frame Material : Aluminium  
Aluminium Thickness : 1.6mm

Aluminium Grade : 6063-T5

Infil Panel : 6.38mm - 8.38mm  
Laminated Glass

Locking System : Embedded Handle

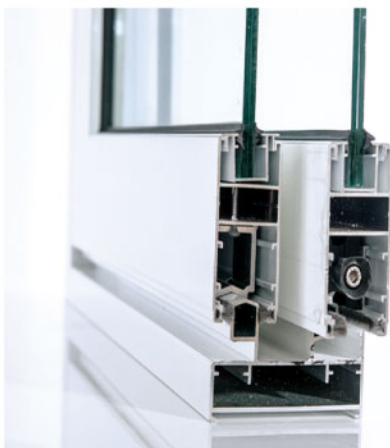
A5 Handle : Zinc Die Cast  
Embedded C Handle : Aluminum



Embedded  
A5 Lock



Embedded  
C Handle



Aluminum  
Extrusion



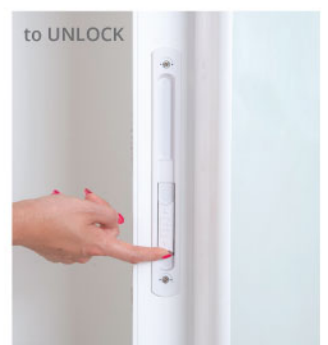
## HANDLE CHOICE



**Lock System :** Zinc Die Cast Security Lock  
**Color :** Black / White



**Lock System :** MultiPoint Security Lock  
**Color :** Black / White







# MULTI SLIDING DOOR

Smooth Gliding Experience



## Heavy Duty Roller

Made from industrial nylon  
Support up to 120KG/leaf



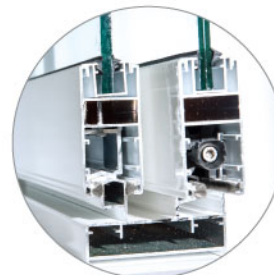
## Rust Proof

Durable Powder Coated  
Aluminum Frame



## Deep Bottom Track

Make it harder from  
lifting the door panel



## Strong Anti Jump Track System

Enhanced Security feature



## Security Lock

4 Hook lock-in System



## Thick & Strong

Aluminum Extrusion



## Non-Shattered Glass

Two layer laminated glass



## MoHair Weather Strip

- Sound Reduction
- Dust/Rain Filter
- Keep out of weather



## Stopper

Reduce collision sound



## Easy Cleaning

Water & Rust Proofing





## Model: Multi Sliding Door

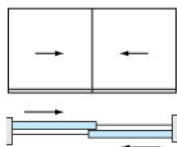
*Custom Made just for you*

|                 |   |
|-----------------|---|
| Frame Finish    | Powder Coated (Available in Black ,Grey and White)  |
| Glass Type      | 3mm+0.38+3mm (Upgrade Optional 4mm+ 0.38 + 4mm)   |
| Accessories     | Die Cast Zinc Lock  |
| Product Name    | MultiSliding Door (Exterior Door)   |
| Frame Color     | Matte Black (Exterior Weatherproof Powder Coating)  |
| Product Style   | Modern  |
| Product Origin  | Malaysia (Selangor)   |
| Production Time | 14 working days (Longer during peak season)   |
| Terms & Con     | Minimum two doors ,minimum sqft is 42sqft, which is size is 6' x 7' H (1800mm x 2100mm), for size below this size will still be calculated as 42sqft. |

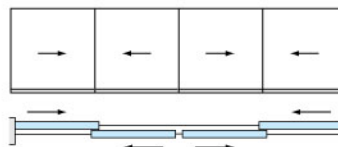
**EXTRA FEATURES :** ALL PRODUCTS COMES WITH TWO YEARS WARRANTY AND TWO YEARS WARRANTY WITHIN KLANG VALLEY ONLY. FOR SUPPLY ONLY, NO WARRANTY GIVEN EXCEPT FAULTY MANUFACTURING ACCESSORIES.

### 2 Tracks

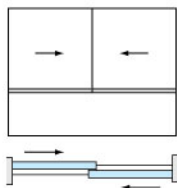
2-leaf  
2 tracks



4-leaf  
2 tracks

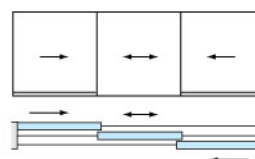


Integrated composite  
2-leaf

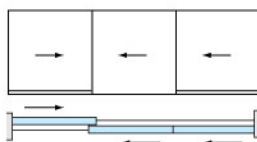


### 3 Tracks

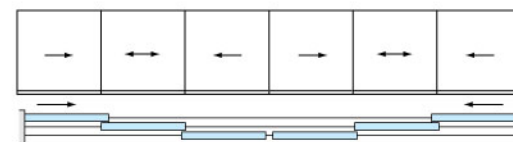
3-leaf  
3 tracks



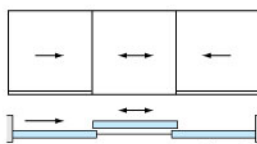
3-leaf joined  
2 tracks



6-leaf  
3 tracks

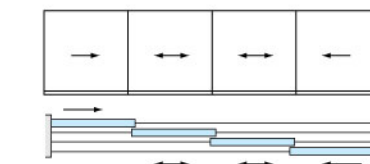


3-leaf independent  
2 tracks



### 4 Tracks

4-leaf  
4 tracks

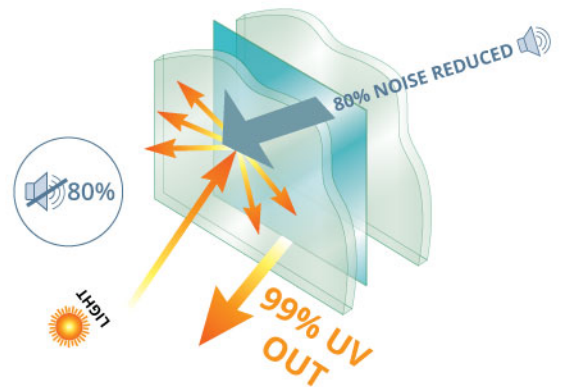
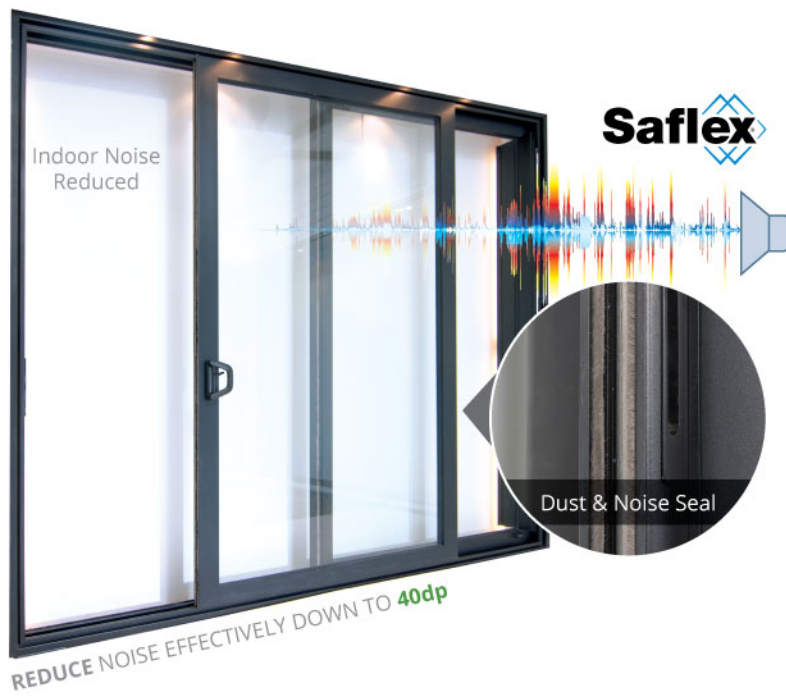






# Multi Sliding Door

*Designed for*  
**Sound Reduction**



## Door Opening Mechanism



**2 Door Series**  
No. of Panel  
**2 + 0**



**3 Door Series**  
No. of Panel  
**2 + 1**



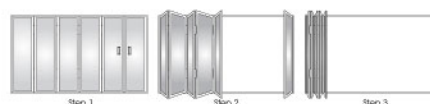
**4 Door Series**  
No. of Panel  
**4 + 0**



**5 Door Series**  
No. of Panel  
**4 + 1**



**5 Door Series**  
No. of Panel  
**5 + 0**



**6 Door Series**  
No. of Panel  
**5 + 1**



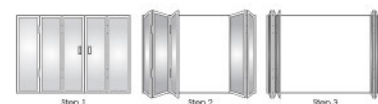
**3 Door Series**  
No. of Panel  
**3 + 0**



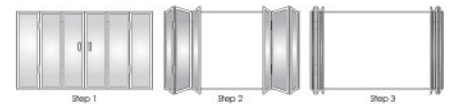
**4 Door Series**  
No. of Panel  
**3 + 1**



**4 Door Series**  
No. of Panel  
**2 + 2**



**5 Door Series**  
No. of Panel  
**3 + 2**



**6 Door Series**  
No. of Panel  
**3 + 3**

Sliding ⇌ Swing







## THE LUXE SERIES

## THE PRESTIGE SERIES



**Multipoint Safety Lock**  
For better security against adverse force  
(SUS304 S/Steel)

Latch & Lock



What's THE LUXE more compare to THE BASICS?



**Concealed Hinge Bar**  
Provides sleek & solid view

**Highgraded ABS Lock Handle**



**Thicker & Heavier Alum Frame Profile**

**More Heavy Duty Roller System**  
Size up to 3'x 12'H per panel

|                     | Center Bar Concealed   | Folding Panel Latch or Handle?  | Folding Hinge   | Concealed Bar Hinge  |
|---------------------|--|---|---|--|
| THE PRESTIGE SERIES | <br>Yes | <br>Handle Bar | <br>3 Sectional | <br>Yes |
| THE LUXE SERIES     | <br>No  | <br>Latch      | <br>2 Sectional | <br>No  |

## MULTI FOLDING DOOR

Color Choice



### LAMINATED SAFETY GLASS

1. 10X times stronger than normal glass
2. Filter 99% UV Ray
3. High heat resistant
4. High Force/stress resistant
5. NON Shattered when break.
6. Reduce 70% Sound transmission
7. Burglary Protection (Forced-entry Resistant)
8. Storm Protection (Strong wind resistant)

**SAFETY** Anti Shattered

**SECURITY** 10X Stronger

**SOUND** Reduce 70% sound trans

**UV PROTECT** Filter more than 99% harmful UV rays

**Saflex**  Made in USA



Non-Shattered

### FRAME COLOR (POWDER COATED)

Fluorocarbon chemistry technology

**Highest Color Retention**

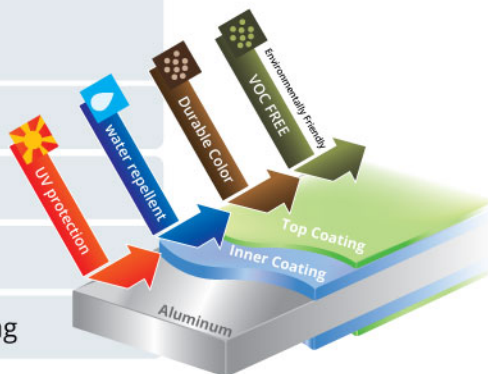
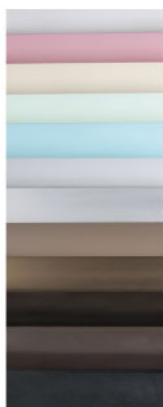
**RUST PROOF** water repellent

**UV FILTERED** Protection

**VOC FREE** Paint powder

**ANTIDUST** Surface easy for cleaning

DuPont™  
**ALESTA**®  
Powder Coatings







## 3RD GENERATION

**HD**  
HEAVY DUTY

## MULTIPOINT LOCKING SYSTEM

Multiple Lateral Locks against Intruders

Multiple Locking Points to keep the doors tight and secure

Smooth Chamfered deadbolts in lock cases

Reduce excessive noise and energy wastage

Excellent weather sealing for thermal insulation and energy economy

Resistant to lateral thrust forces

## FOLDING HINGE (HEAVY DUTY)

### Resistant to lateral thrust forces

#### Heavy Duty Roller System

1. In the bottom part of the door, a carriage mounted on needle bearings slides in the threshold section.
2. The guiding threshold section is designed for dismantling-free cleaning and maintenance.
3. In the top part of the door, a hinge fitted with guiding rollers slides in the rail section.

### WHY Industrial Nylon Roller?

- ✓ **HIGH Fracture Resistant**
- ✓ **HIGH load capacities**
- ✓ **HIGH Impact Resistant**
- ✓ **HIGH Wear & Tear Resistant**
- ✓ **HIGH Abrasion Resistance**
- ✓ **HEAVY Duty**

### ABS HANDLE LOCK

#### Security Enhanced!

- ✓ **Reliable** under heavy use
- ✓ **Low-noise** function (silent pattern)
- ✓ **Heavy duty** usage in everyday life calls for durability.

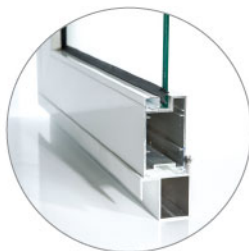
### ABS HANDLE LOCK

#### Security Enhanced!

Intermediate doors shoot bolts operated by flush handles **disable attempt** to lift the doors off the track.



**Easy Cleaning**  
Water & Rust Proofing



**Thicker & Stronger**  
Aluminum Extrusion



**Mohair Weather Strip**  
- Sound Reduction  
- Dust/Rain Filter  
- Keep out of weather



**Rust Proof**  
Durable Powder Coated  
Aluminum Frame



## Balcony & Staircase Glass

Outdoor & Indoor Series



Embedded U-Channel



Nut Holder

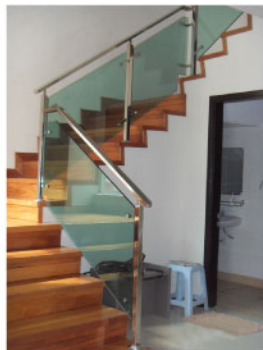


4S606

### Staircase Model



4S101



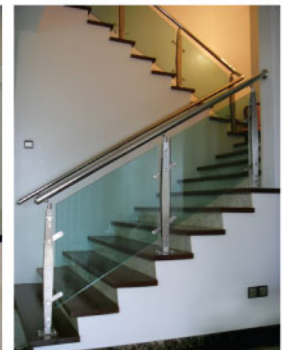
4S202



4S303

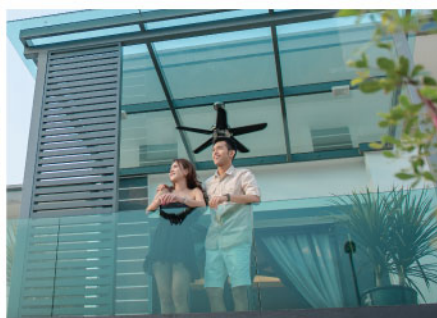
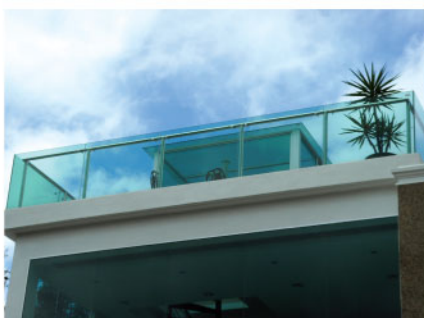
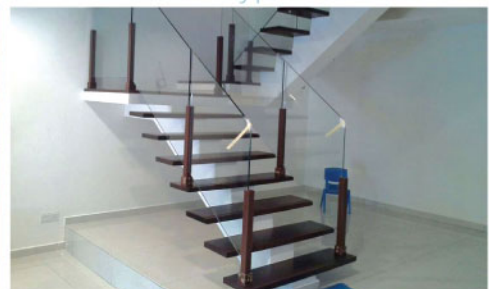


4S404

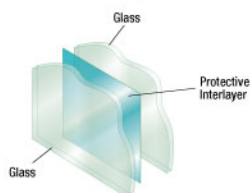


4S505

### All Types of Glass Rail







## Benefits of Laminated Glass

### Safety

- Meets all the national safety glazing standards (ANSI Z97.1 CPSC 16 CFR 1201 – Cat II)
- Resist penetration, won't shatter into dangerous fragment

### Sound

- Typical STC (Sound Transmission Class) ratings between 34 to 40\*
- Can reduce perceived noise by up to 50% Typical STC (Sound Transmission Class)

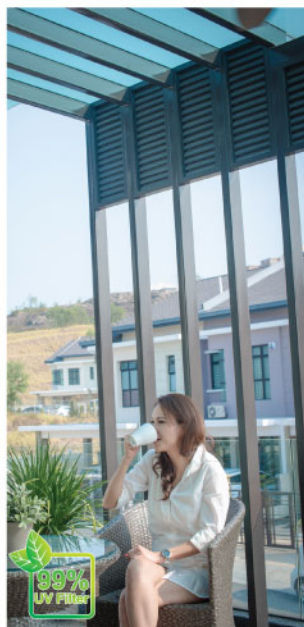
### Security

Standard LAG (1/4" with 0.060" thickness) provides a significant improvement in resistance to attack from a variety of hand held weapons in: Rock, Hammer, Pry bar, Brick, Chisel, Axe, etc.

### Solar

Screens out 99% of harmful & damaging UV rays up to 380 nm (= SPF 50+) Protects delicate plants, fabrics, carpets, and furniture from fading.

| Solar Data                         | Test method                 | clear glass | Visible light (D65)    | Solar        |
|------------------------------------|-----------------------------|-------------|------------------------|--------------|
| Transmission                       | ISO 9050 / EN410 / NFRC 300 | 2 x 3.0 mm  | 88%                    | 71%          |
| Reflection                         | ISO 9050 / EN410 / NFRC 300 | 2 x 3.0 mm  | 8%                     | 7%           |
| Absorption                         | ISO 9050 / EN410            | 2 x 3.0 mm  | 4%                     | 22%          |
| Solar Heat Gain Coefficient (SHGC) | NFRC 300                    | 2 x 3.0 mm  | 0.80                   |              |
| Light to Solar Gain (LSG)          |                             | 2 x 3.0 mm  | 1.10                   |              |
| UV Blocking                        | Wavelength Damage Weighted  | 2 x 3.0 mm  | 300 - 800<br>300 - 400 | >99%<br>>96% |



## Skylight Metal Structure Choice



Hollow Type



Hollow T-Bar



Wave T-Bar



Pigeon T-Bar



Origin T-Bar



**NEW**



| Various of Infill Panel Choices |



**5th GENERATION  
STAINLESS STEEL**  
Bearing Roller

**HD  
HEAVY DUTY**

**2 YEARS WARRANTY**

**5th GENERATION**

- ✓ 5x Stronger
- ✓ 5x Smoother
- ✓ 5x Durable
- ✓ 5x Stronger

Suspended Roller



- 100% Rust Proof Materials
- Heavy Duty Bearing System
- Strong Aluminum Profile to sustain the glide system
- Smooth & Silent Roller System



#### Lock System

**Quality Lock** Push Up to open Locking System.

**Sleek Embedded Handle** Space saving and child injury prevention.



#### Powder Coating Frame

**VOC FREE** Eco Friendly

**UV Filtered** Resists to UV and Acids.

**No Paint Runs** Absolute smooth surface.

**Wide Range of Color**

Pick your Favorite!



#### 3rd Generation Track

for Effortless gliding experience.

#### Track Lock System

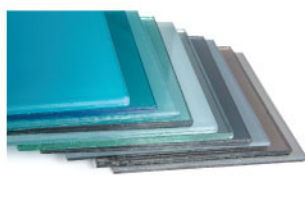
Door will not fall off the track easily.

[www.reliancehome.com/catalog](http://www.reliancehome.com/catalog)

1 Frame Color Choice



2 Laminated Glass



3 Acrylic Panel



4 Ecopanel Graphic





Water  
Rust  
**PROOF**

KOREAN UV PRINT TECHNOLOGY AT ITS BEST



FD117



FD115



FD118



FD113



FD113



FD112



FD116



FD111



FD117 - Eco



FD117+  
1/3 LOUVRES



FD117+  
1/2 LOUVRES



FULL LOUVRES

## UV-Protective Green Technology



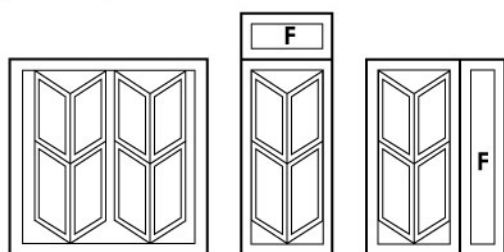
Introducing "Eco-Solvent" ink, which is a VOC FREE and environmentally friendly materials for green printing.

### WATER PROOFING

Our final layer of lamination provides a water-proofing shield to our artprints.

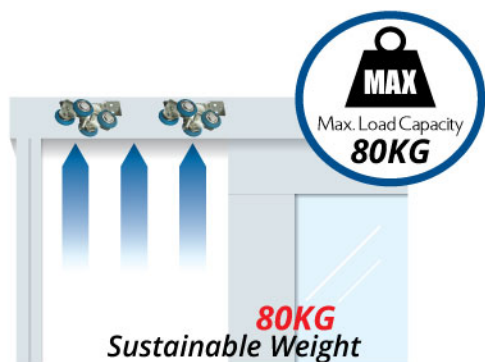
### HIGH SCRATCH RESISTANCE

Every EcoPanel print is coated with a protective, scratch-resistant UV laminate.



Types of Door Mechanism

# HANGING SLIDING DOOR



**HD**  
HEAVY DUTY

2 YEARS WARRANTY

## 3<sup>rd</sup> GENERATION

- ✓ HIGH Fracture Resistant
- ✓ HIGH load capacities
- ✓ HIGH Impact Resistant
- ✓ HIGH Wear & Tear Resistant
- ✓ HIGH Abrasion Resistance
- ✓ HEAVY Duty



### Double Layer Laminated Glass

1. 10X times stronger than normal glass.
2. NON Shattered when break.
3. Reduce 70% Sound transmission.
4. High heat resistant.
5. High Force/stress resistant.
6. Burglary Protection (Forced-entry Resistant)
7. Filter 99% UV Ray
8. Storm Protection (Strong wind resistant)



### Lock System

**Quality Lock** Push Up to open Locking System.

**Sleek Embedded Handle** Space saving and child injury prevention.



### Powder Coating Frame

**VOC FREE** Eco Friendly

**UV Filtered** Resists to UV and Acids.

**No Paint Runs** Absolute smooth surface.

**Wide Range of Color**

Pick your Favorite!



### No Bottom Track

- ✓ Children Friendly Door.
- ✓ No bottom track that causes accumulation of dusts and dirt.
- ✓ No coordination track problem.



Smooth Glide





NO BOTTOM  
TRACK!

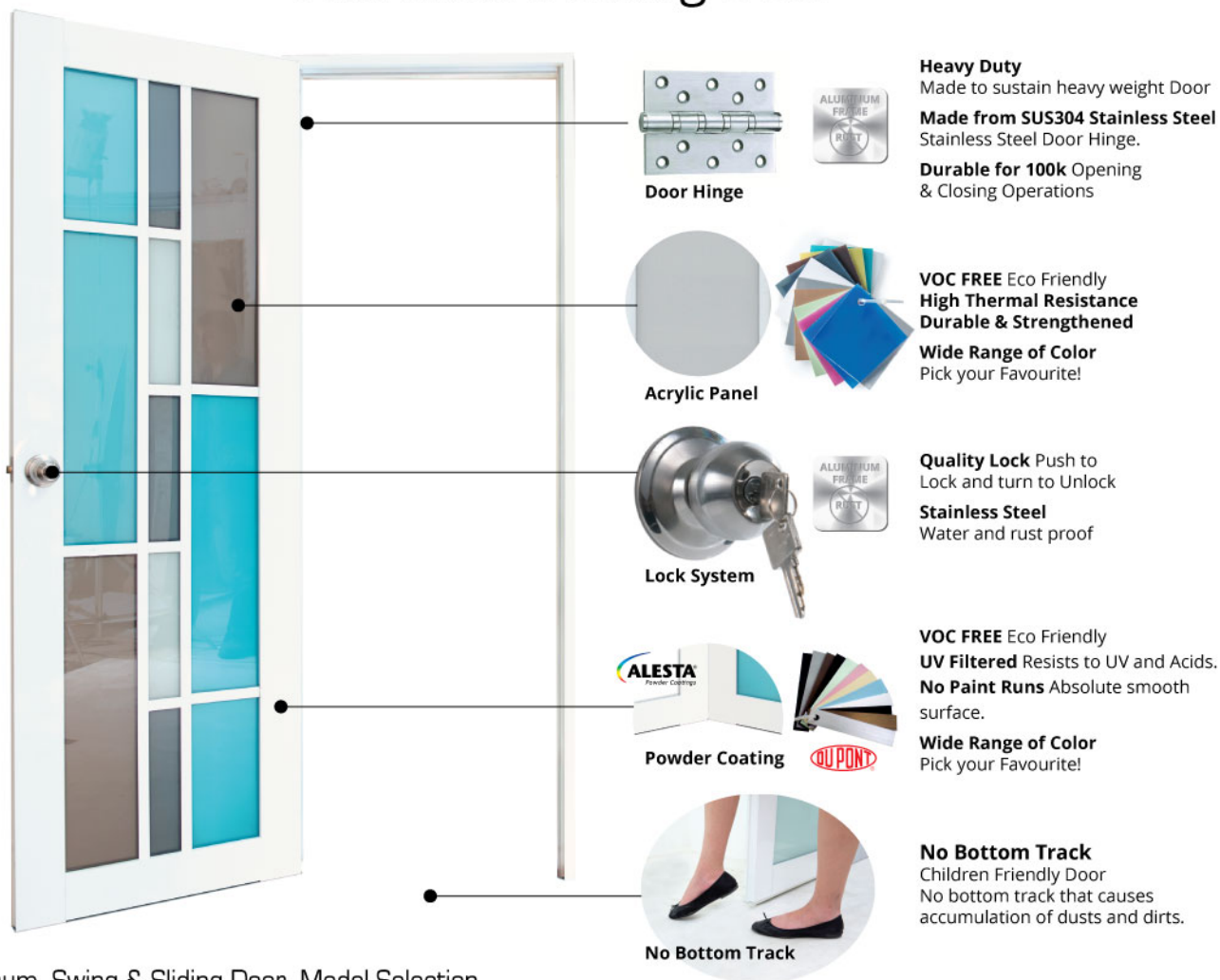


## SlidingPRIME

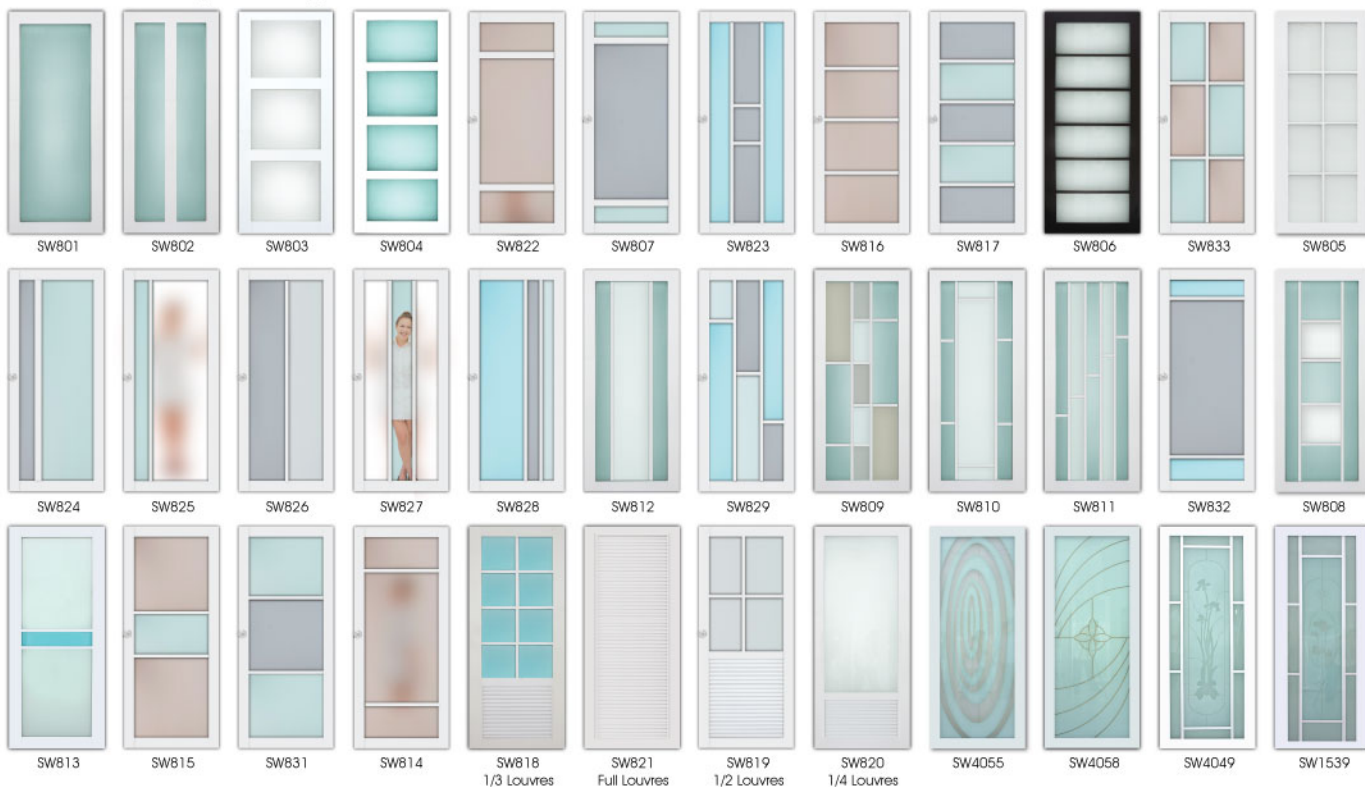
### FEATURES:

- ✓ **Top Hanging Track (No Bottom Track).**
- ✓ **Aluminum Frame > Water Proof & Rust Proof.**
- ✓ **Industrial Nylon Made Heavy Duty Roller.**
- ✓ **Smooth Gliding experience.**
- ✓ **Fully Custom made**, choose your design and color.
- ✓ **Affordable & Practical.**
- ✓ **More than 20 years** of manufacturing Experience.
- ✓ **Oil Proof**, high scratch resistant.
- ✓ **Solid and Durable.**
- ✓ **3 Types** of materials to choose:
  1. Laminated glass
  2. Acrylic Panel
  3. Graphic Eco Panel

## Aluminum Swing Door



### Aluminum Swing & Sliding Door Model Selection







Kitchen Door



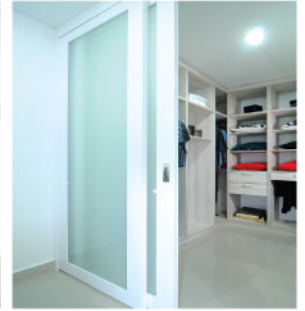
Walk in Wardrobe



Shoe Room Door



Bathroom Door



Closet Door



Dividing Hall



Yard Door

- ✓ No Bottom Track
- ✓ Water- Proofing
- ✓ Rust-Proof
- ✓ Heavy Duty Roller
- ✓ Custom Made
- ✓ 2 Years Warranty



Wet/Dry Kitchen

## Sliding Door

### Lockset Choice

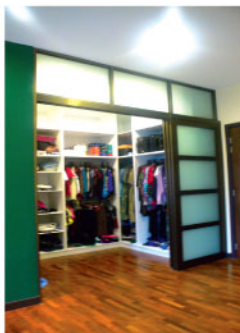


## Swing Door

### Lockset Choice



Kitchen Door



Wardrobe Door



Study Room Door



Kitchen Door



Bathroom Door



Office Meeting Room



Entertainment Room



Study Room Door



Living Hall to Garden



Toilet Door



**SAFETY** is the best  
Insurance for yourself  
and your family.

防爆玻璃，  
保护你的一家

**SAFETY**

**Anti Shattered**

**STRENGTH**

**10X Stronger**

**SECURITY**

**Superior Edge Stability**

**SUSTAIN**

**Higher uniform  
loads** after breakage

**STRESS TESTED**



TEST PERFORMED AT THE LAB  
OF St. Louis, Missouri

*Multiple stress tests performed on  
HydroSafe™ Glass*



*Glass was hit by steel hammer, the glass holds together  
when shattered, reduce the risk of injury to the lowest.*

More than 80KG sand bag hitting the HydroSafe™ Glass multiple times, the glass show no sign of breakage.

More than 150KG weight of two men bouncing on top of the glass, the glass bend without breaking.







Make your life  
much **EASY!**

## HydroSafe™ Glass

- ✓ **Reduce your shower cleaning time!**
  - ✓ **Water Repellent Surface** (Nano Technology)
- \*The effectiveness of repellent surface subject to the usage, maintenance and care of the users, no warranty is given.

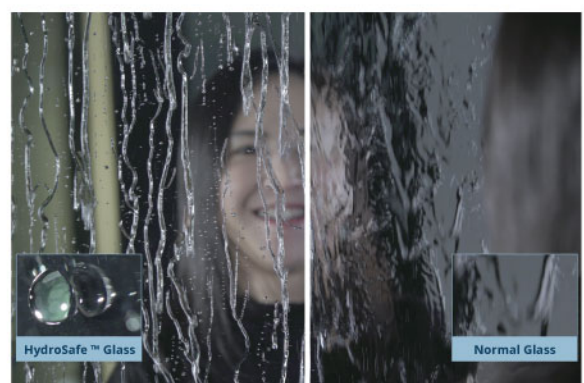
**NEW**

- ✓ **Anti-Explosion**
- ✓ **Water Repellent Surface**

- ✓ 10 times stronger than normal glass
- ✓ High resistant to impact
- ✓ Higher Bending strength
- ✓ High heat resistant
- ✓ High Force/stress resistant
- ✓ Protect against serious injuries

*"HydroSafe™ Glass made my cleaning effortlessly! I can have more time to spend with my family"*

- Katherine, Housewife



**Multiple stress water tests performed on HydroSafe™ Glass**

### HydroSafe™ Glass Care Instruction:



1. HydroSafe™ Lamination is a scratchable material, avoid contact with any cleaning tools which comes with rough surface. (e.g plate sponge, polishing tools, paper, glass cleaning wipes, glass cleaner tools and/or any possible material that may cause a scratch.
2. Wipe your HydroSafe™ Glass with a delicate cloth and slightly dampened cloth.
3. Avoid using any acidic or chemical detergent, detergents, glassware detergents or related glass cleaner material on HydroSafe™ Glass surface as it may damage the effectiveness of the HydroSafe™ Glass.

REH Shower Series



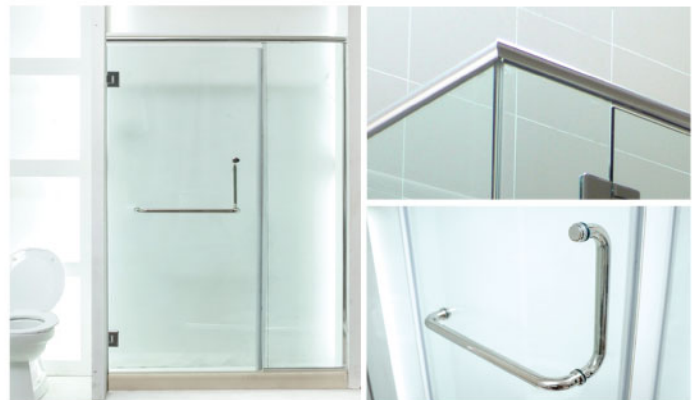
**MODEL: REH100 SSL** / SUS304 Stainless Steel Header & Handle  
G. Thickness: 10mm Clear Tempered



**MODEL: REH100 Single Glass Door**  
G. Thickness: 10mm CTG



**MODEL: REH100 SR** / Frame: Silver Chromed Polish  
G. Thickness: 10mm Clear Tempered / Header: S. Steel 304



**MODEL: REH100 AL** / Frame: Aluminium Anodised  
G. Thickness: 10mm Clear Tempered / Header: Aluminum



**MODEL: REH100 SQ** / Frame: Silver Chromed Polish  
G. Thickness: 10mm Clear Tempered / Header: S. Steel 304



**MODEL: REH300 SQALU** / Frame: Silver Chromed Polish  
G. Thickness: 10mm Clear Tempered / Header: S. Steel 304





**NEW**



**MODEL: RS120 - 4mm PS**  
Frame: Anodised/ Powder Coated  
Infil: Polystyrene Panel



**MODEL: RS130 - 4mm 'S' TG**  
Frame: Anodised/ Powder Coated  
Infil: 4mm 'S' Design Tempered Glass



**MODEL: RS140 - 4mm CTG**  
Frame: Anodised/ Powder Coated  
Infil: 4mm Clear Tempered Glass



**MODEL: RS431 - Sliding Door**  
Frame: Anodised/ Powder Coated  
Infil: 4mm Polystyrene Panel



**MODEL: RS220 - Sliding Door**  
Frame: Anodised/ Powder Coated  
Infil: 4mm CTG



**MODEL: RS111 - Folding Door**  
Frame: Anodised/ Powder Coated  
Infil: 4mm CTG



**MODEL: RS109 - Folding Door**  
Frame: Anodised/ Powder Coated  
Infil: 4mm CTG



**MODEL: RS180Z - Folding Door**  
Glass: 8mm C.Tempered Glass  
\*c/w stainless steel handle



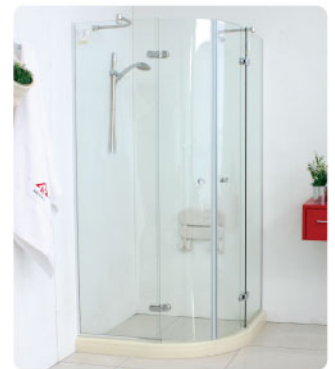
**MODEL: RS5018P - Sliding Door**  
Glass: 8mm C.Tempered Glass  
\*c/w stainless steel handle



**MODEL: RS5018P + Fix Panel**  
Glass: 8mm C.Tempered Glass  
\*c/w stainless steel handle



**MODEL: RS5018PL - Sliding Door**  
Glass: 8mm C.Tempered Glass  
\*c/w stainless steel handle



**MODEL: RB090R - 180 degree Swing Door**  
G. Thickness: 8mm CTG



**NEW**

**2 Panels, 2 Way Sliding**



**MODEL: 5028P - 2 Way Sliding Door**  
Frame: Silver Chromed Polish  
G. Thickness: 8mm Clear Tempered Glass



**MODEL: KW-P51 - Swing out only**  
Material: Full SUS304 Stainless Steel  
G. Thickness: 8mm Clear Tempered Glass  
Size: 1200mm x 2000mm H  
1400mm x 2000mm H



**MODEL: KK-T11 - Bothside Sliding Door**  
Material: Full SUS304 Stainless Steel  
G. Thickness: 8mm Clear Tempered Glass  
Size: Custom Made



**MODEL: KK-T41 - Sliding Door**  
Material: Full SUS304 Stainless Steel  
G. Thickness: 8mm Clear Tempered Glass  
Size: 985 x 985 x 2000mm H





Glass House



VVP Glass Door/ Window



VVP Office Glass Partition



TG800 Glass Sliding Door



Alum. Glass Partition



Tempered Glass Room



TG800 Glass Door



Glass Dining Divider



Alum. Glass Divider



Aluminum Glass Partition



Study Glass Room



Closet Glass Door



Living Hall Glass Wall



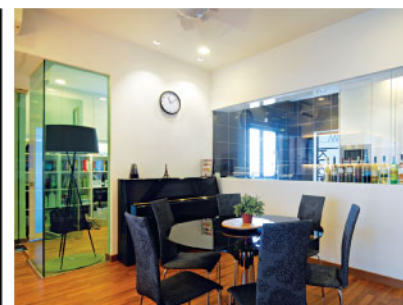
Kitchen Glass Door



Roof Entertainment Room



Waiting Glass Lounge



Interior Glass Wall



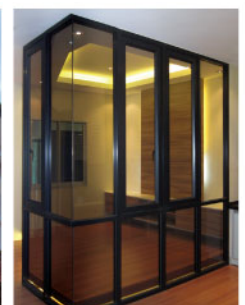
Office Glass Door



Glass Leisure room



Aluminum Louver Fence



Glass Partition