

**RS5028P**  
180° Sliding Door

RS5028P Series





Grade A Tempered Glass Certified by:-



ANSI Z97.1-2004



Cert No:  
BMP555249



Cert No:  
BMP552817

### Product Specification

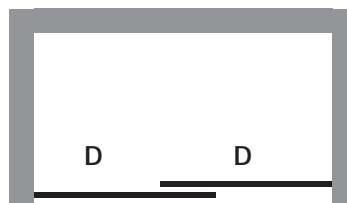
- Surface Finishes : Glossy Polish/Matt
- Material : Brass Chrome
- Test : PSB Test Singapore  
Certified (50,000 Cycles)
- Function : Sliding Door  
(Inward/outward/bothway)
- Glass : 8mm  
Thickness Tempered

### RS5028P

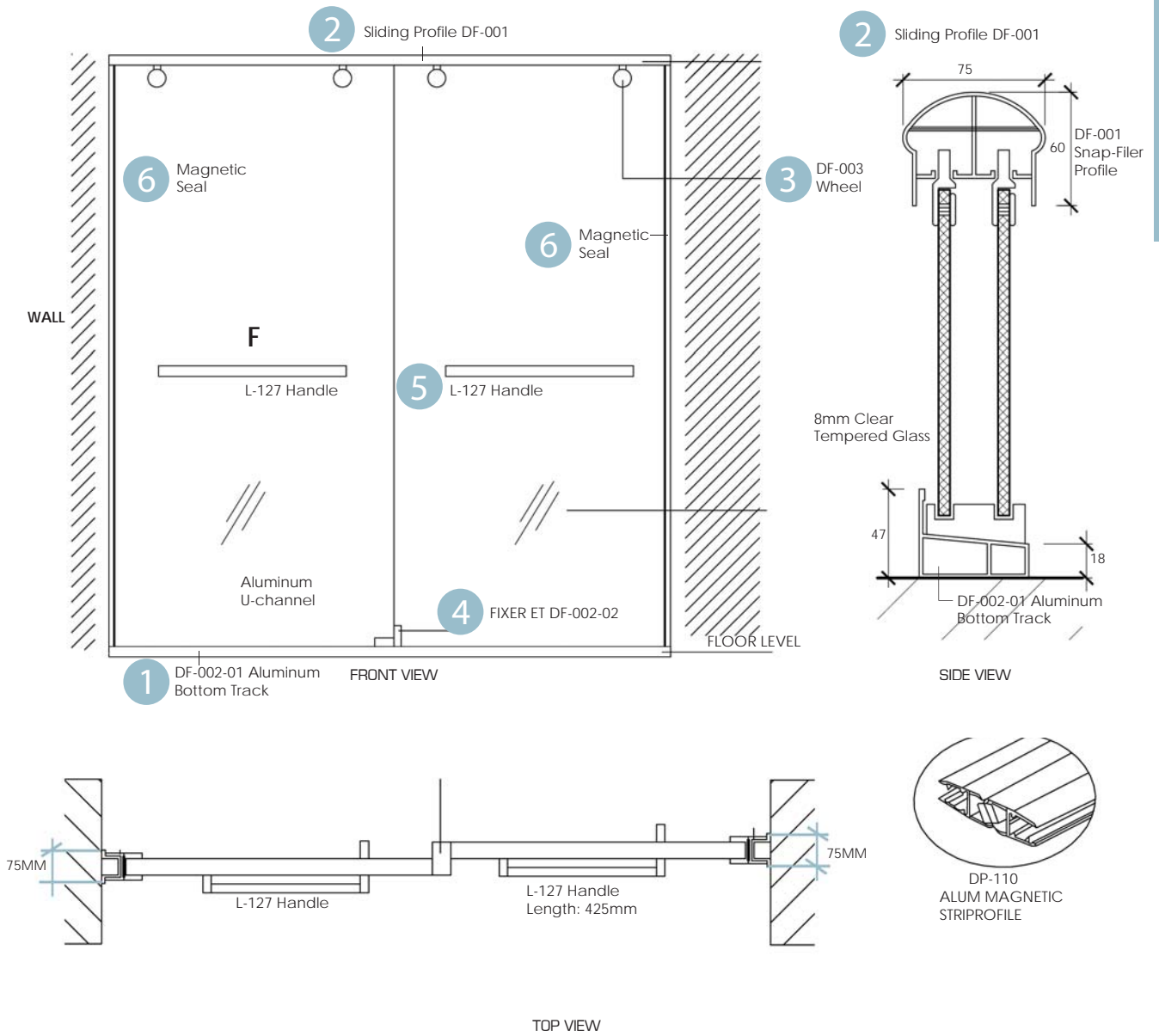
Wall to Wall  
Sliding Door Shower  
\* Two Way Sliding



### | Door Space Allocation |



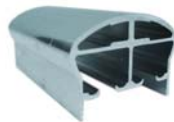
# INSTALLATION MANUAL



## Accessories List:-



1 DF-002-01 Aluminum Bottom Track



2 DF-001 Aluminum Top Track



3 DF-003 Brass Chromed Industrial Nylon Roller



4 DF-002-02 ABS Plastic



5 Bar Handle L-127 SUS304 Stainless Steel Size: 425mm



6 DP-110 Magnetic Seal

