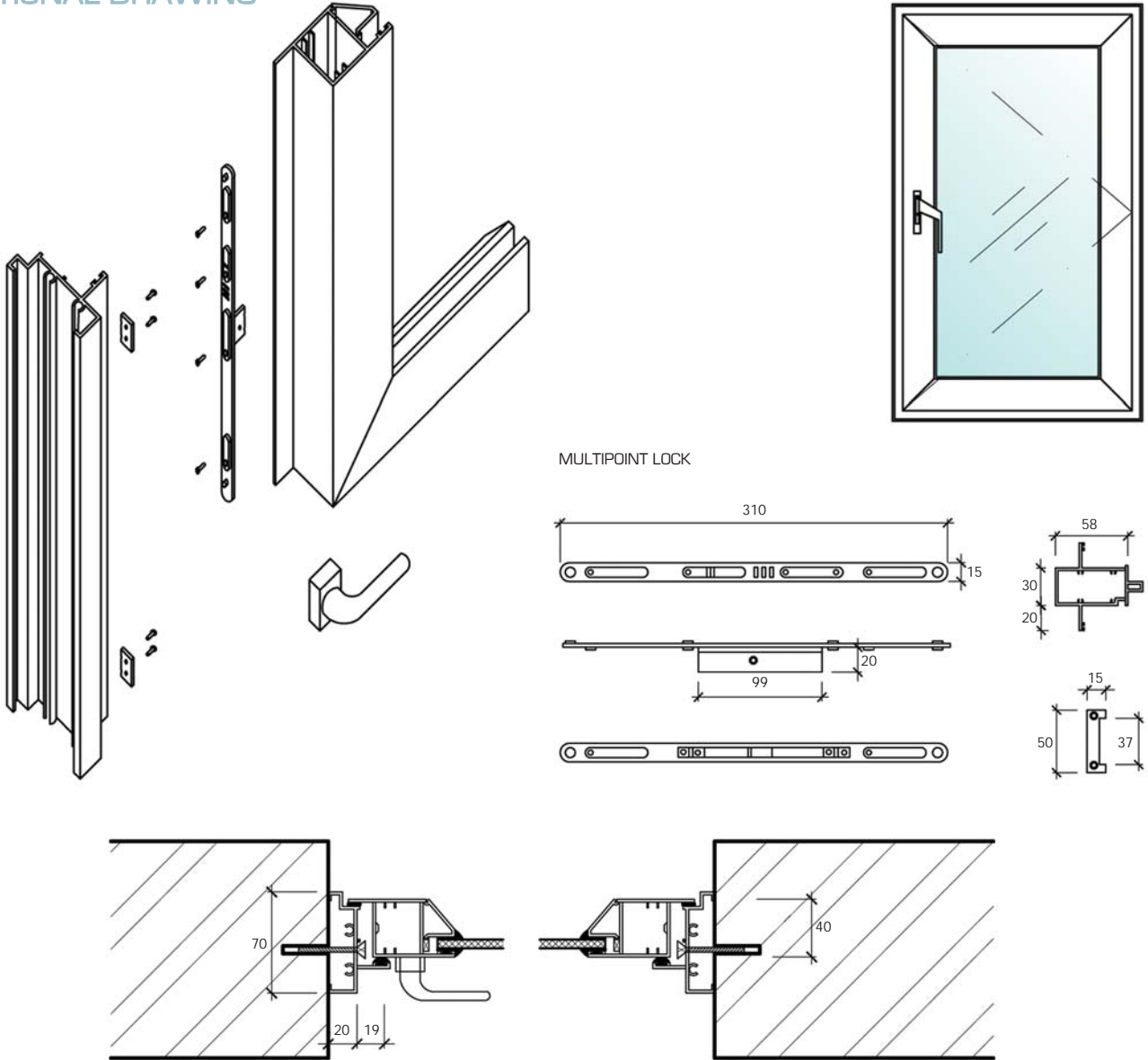




THE PRESTIGE WINDOW



SECTIONAL DRAWING



TOP VIEW

| Multi Point Locking System |



Surface Finishes : Glossy Polish/Matt
 Material : SUS304 Stainless Steel
 Function : Pivot Door
 (outward)

| Bar Hinge System |

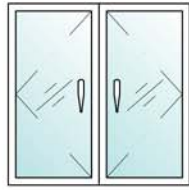


Surface Finishes : Glossy Polish/Matt
 Material : SUS304 Stainless Steel
 Function : Pivot Door
 (outward)

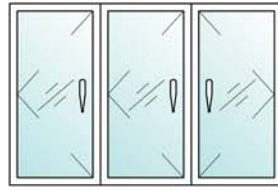
OPENING APPLICATION



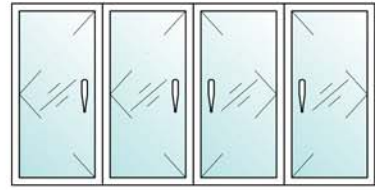
PW-01



PW-02



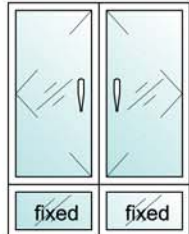
PW-03



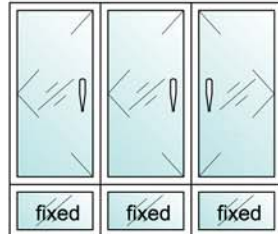
PW-04



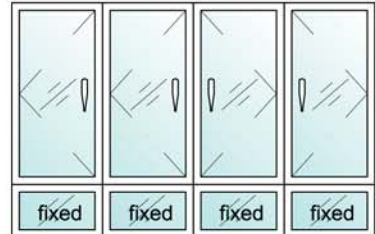
PW-BF01



PW-BF02



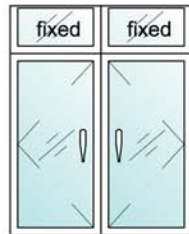
PW-BF03



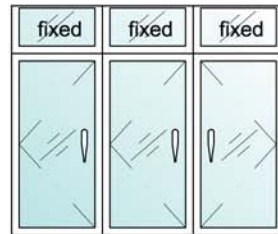
PW-BF04



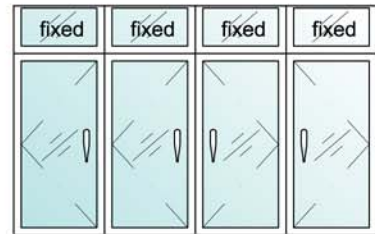
PW-TF01



PW-TF02



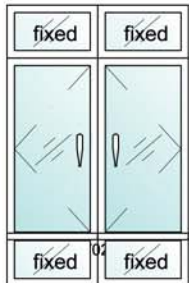
PW-TF03



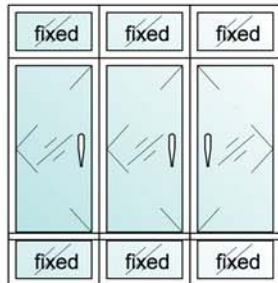
PW-TF04



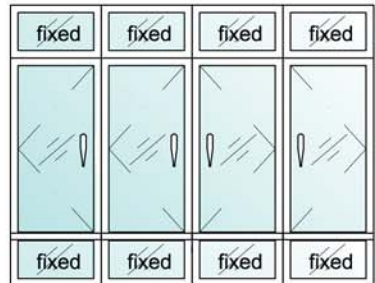
PW-TBF01



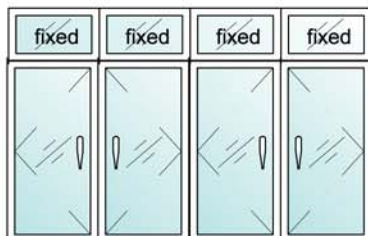
PW-TBF02



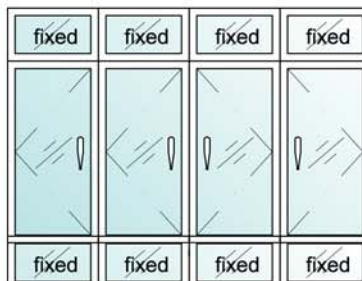
PW-TBF03



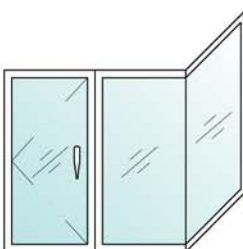
PW-TBF04



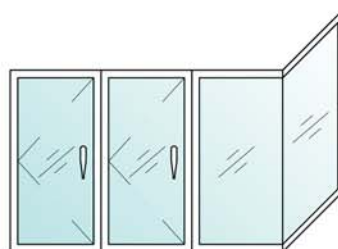
PW-TFO4T



PWT-TBF04



PW-01FP



PW-02FP



Product Specification

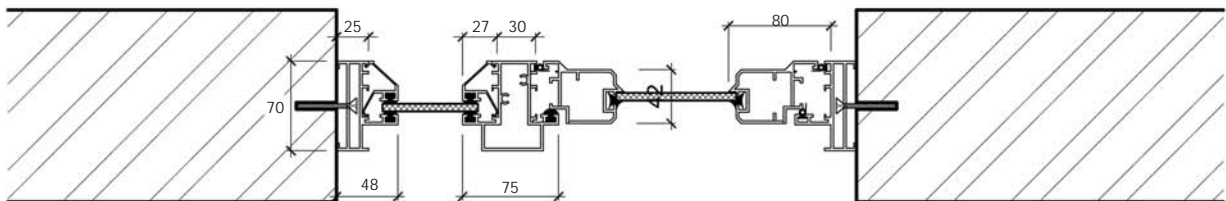
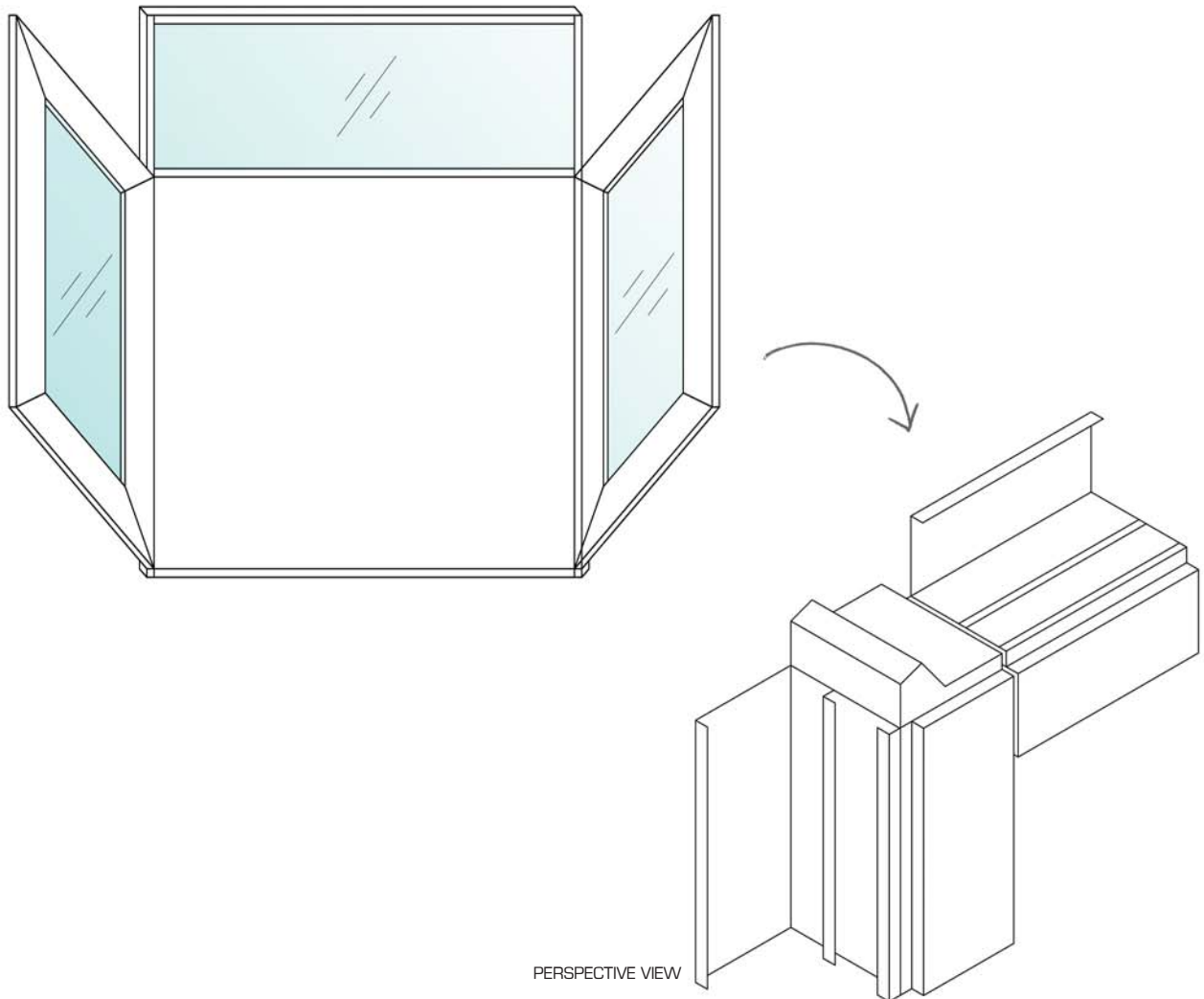
- Frame Material : Aluminum
- Aluminium Thickness : 1.8 - 2.2mm
- Aluminium Grade : 6063-T5
- Infil Panel : 6.38mm - 8.38mm
 - Double Layer
 - Laminated Glass
- Locking System : Multipoint Locking
- Handle : Zinc Die Cast

| Material Specification |

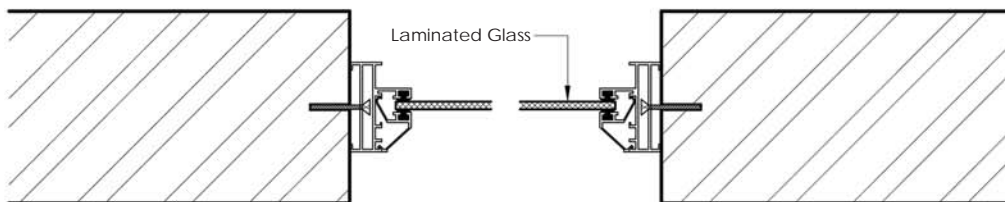


TECHNICAL DRAWING

3D Visual



SIDE SECTIONAL VIEW



TOP SECTIONAL VIEW

The Prestige