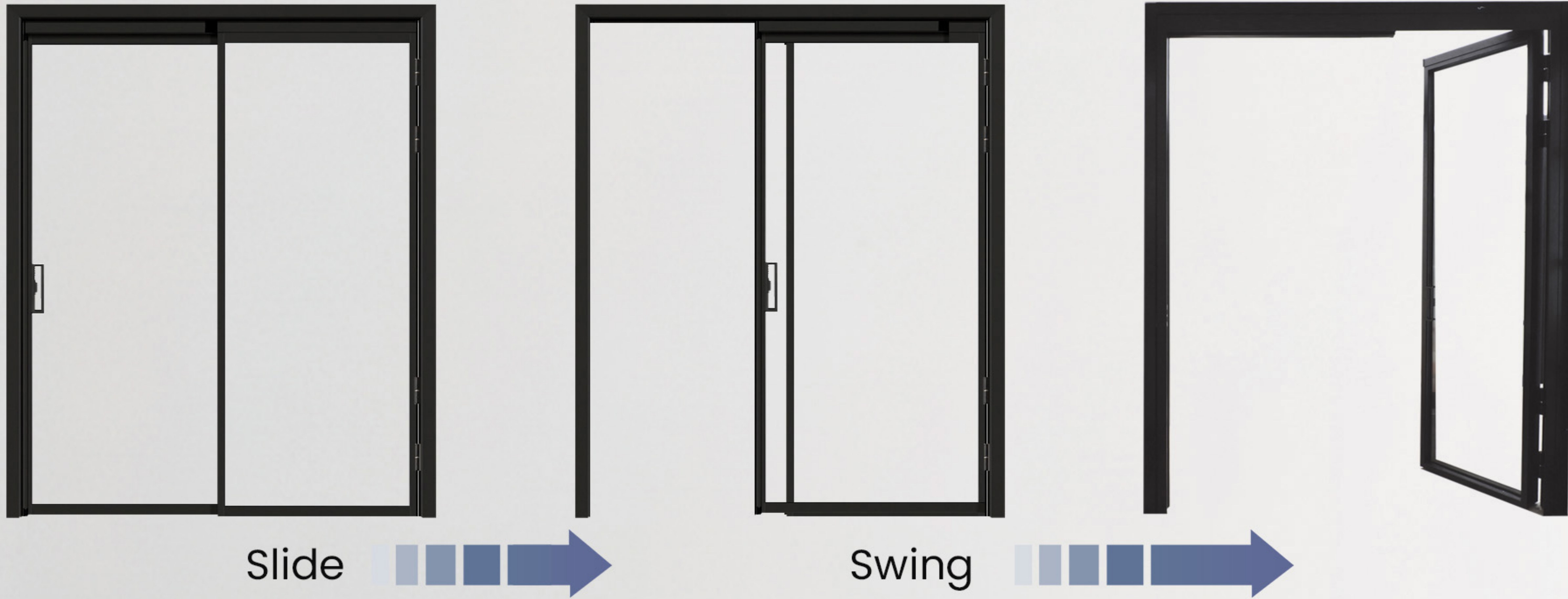


ULTRA

# PD DOOR.

SLIDE N' SWING DOOR







## FEATURES & BENEFITS

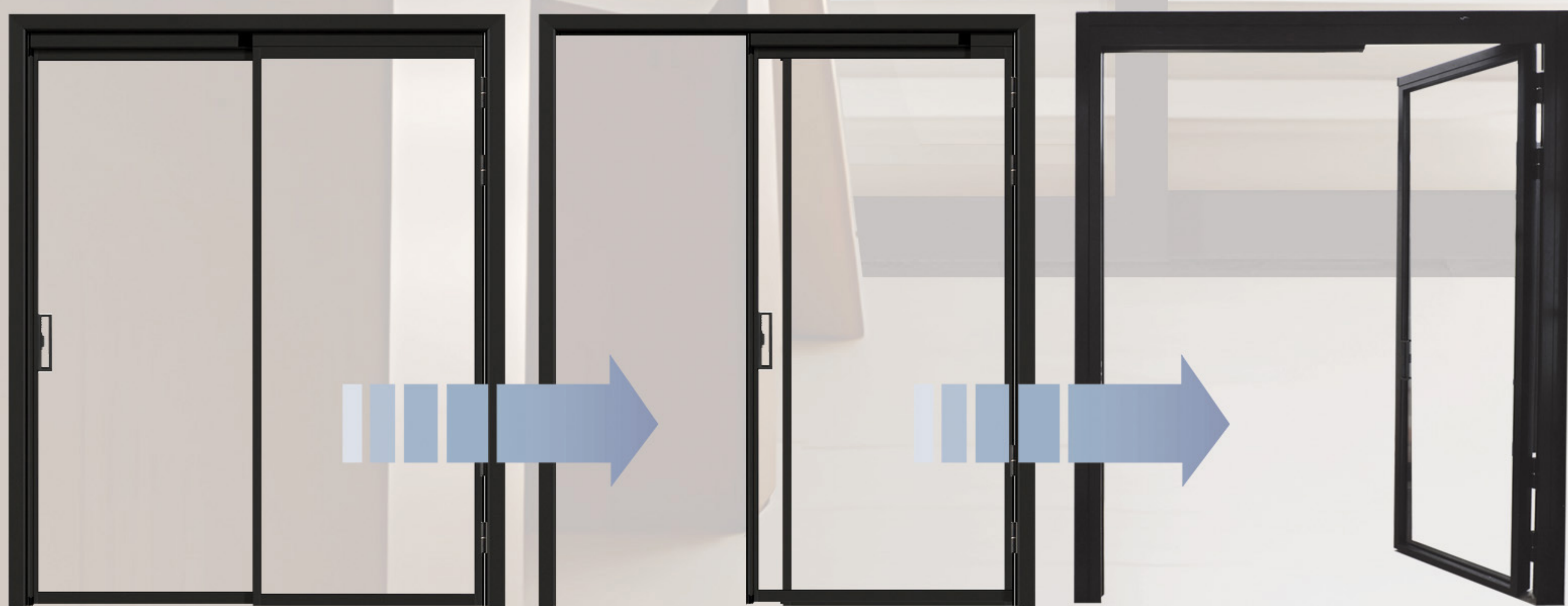
- ✓ PD System (Slide & Swing door operation) - Best space saving door solution.
- ✓ 6.38mm Double Layer Laminated Safety Glass gives your anti-explosion protection.
- ✓ It's durable and easy to maintain.
- ✓ Nease of cleaning and maintenance, adequate air ventilation due to bottom floor clearance.
- ✓ Slim & Sleek frame design transform your space into absolute modern and contemporary look.

## THE MOST SPACE SAVING DOOR

Pd Door system operates in 2 way. **Slide and Swing** beyond 90 degrees and up to 180 degrees flushed with the wall. This will not take up unnecessary space and cause obstruction due to protruding door panels.

PD door designed without the need for bottom rail which is unsightly and hazardous.









## Sliding N Swing Door PD Door

- Multipoint locks extend most, if not, the full height of the door and have multiple locking points along the edge of the door
- The extra locking points strengthen your home's security by providing a tighter seal along the length of the door, top-to-bottom.
- Considerably reduce the risk of a break-in
- Excellent load-bearing support reduces wear and tear, helping doors last longer
- Sleek and Modern frame design provide you better vision and appearance to your home.

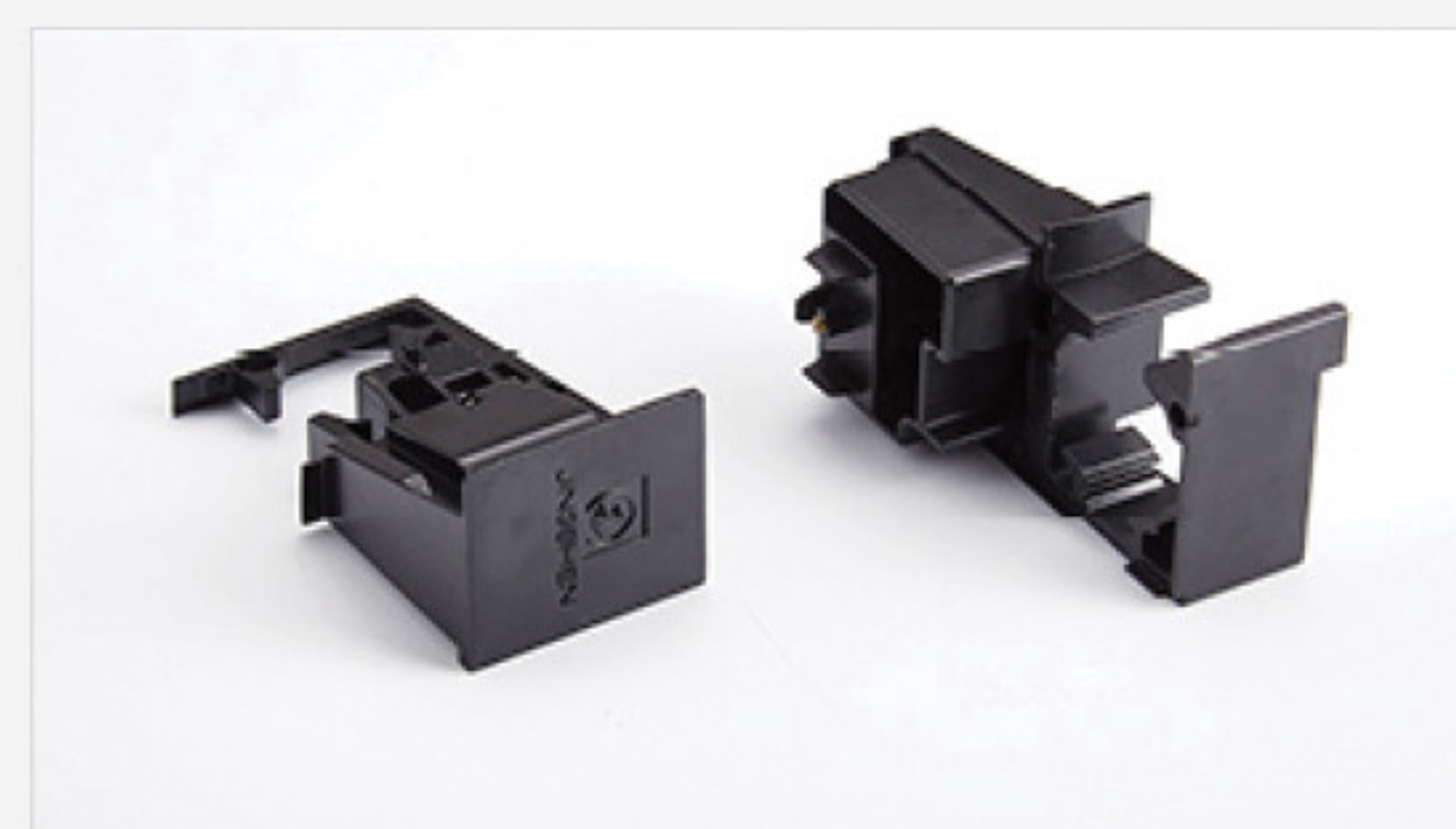


TRACKLESS / NO BOTTOM RAIL

## Parts/ Accessories PD DOOR SYSTEM



SOFT CLOSING HYDRAULLIC SYSTEM



DOOR CLOSURE PARTS



SOLID SURDY HANDLE

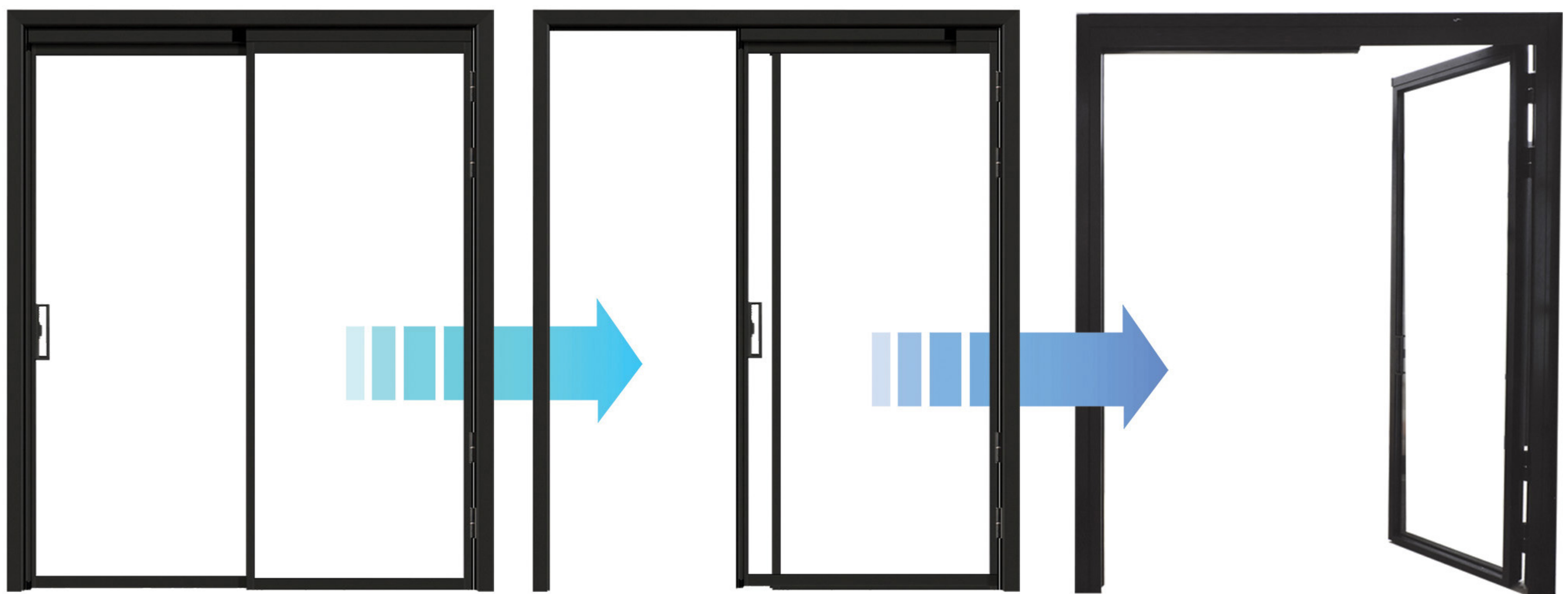






## DOOR MECHANISM

SLIDE & SWING



Slide

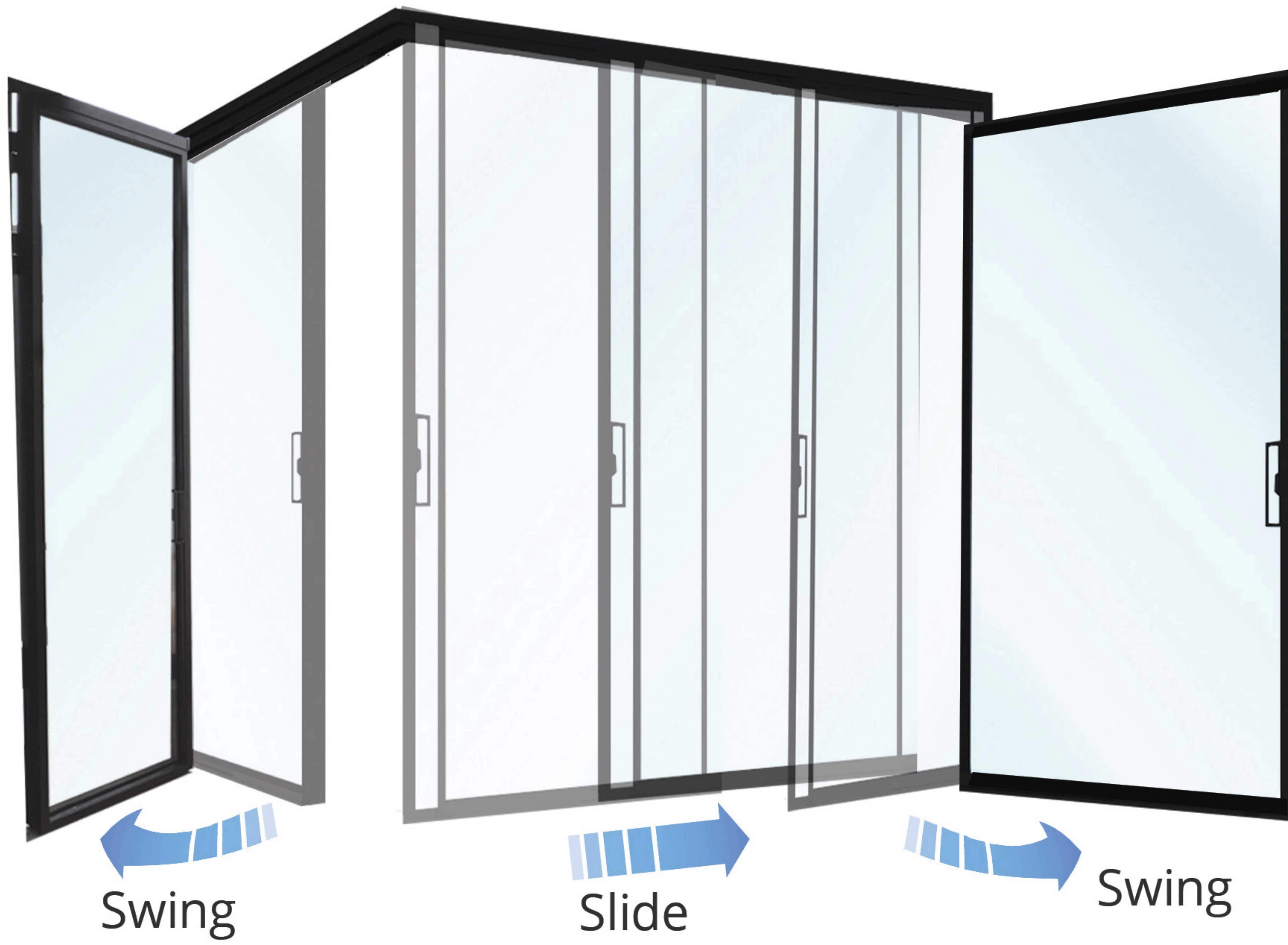
Swing





# L-SHAPE PD DOOR

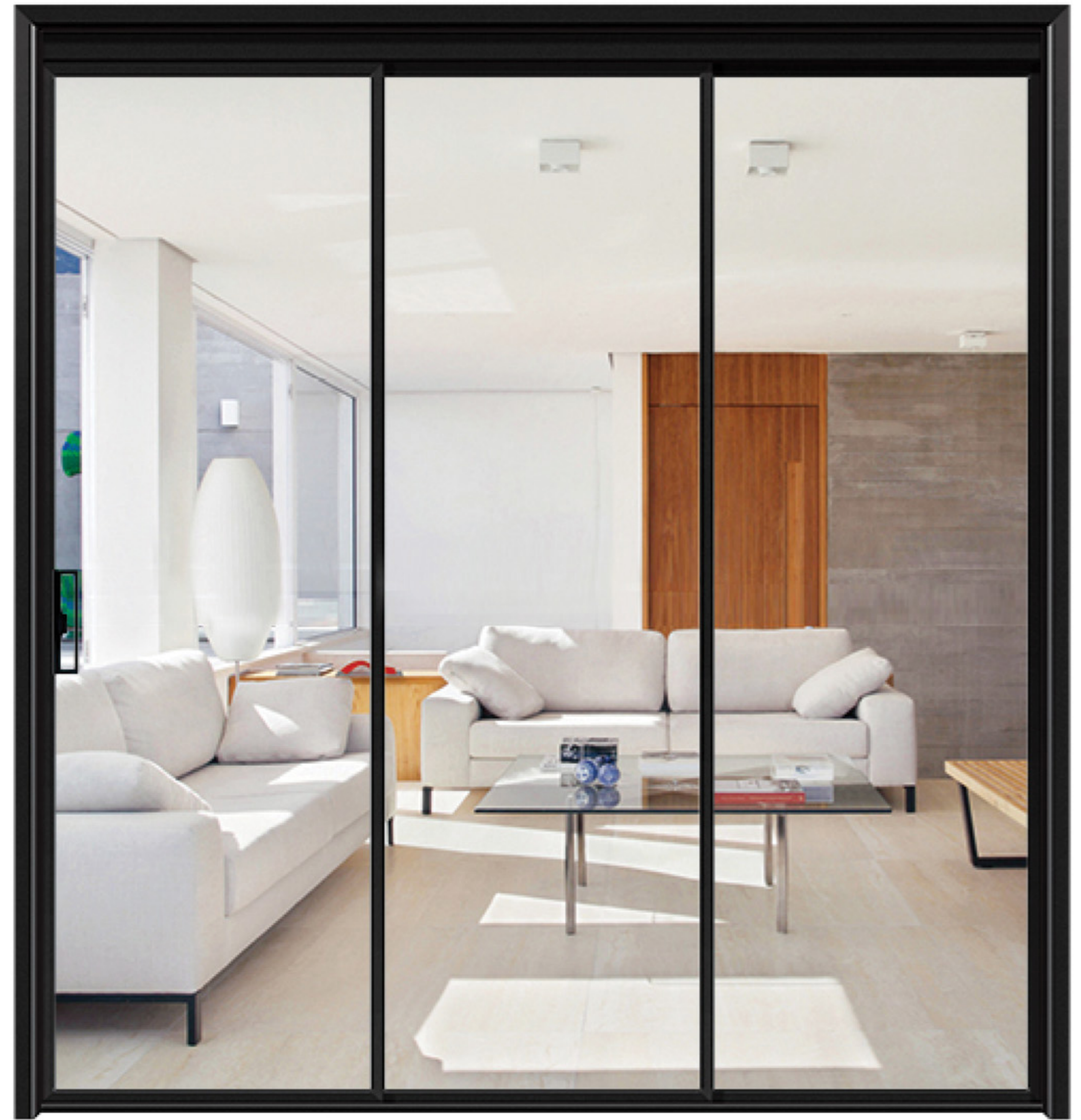
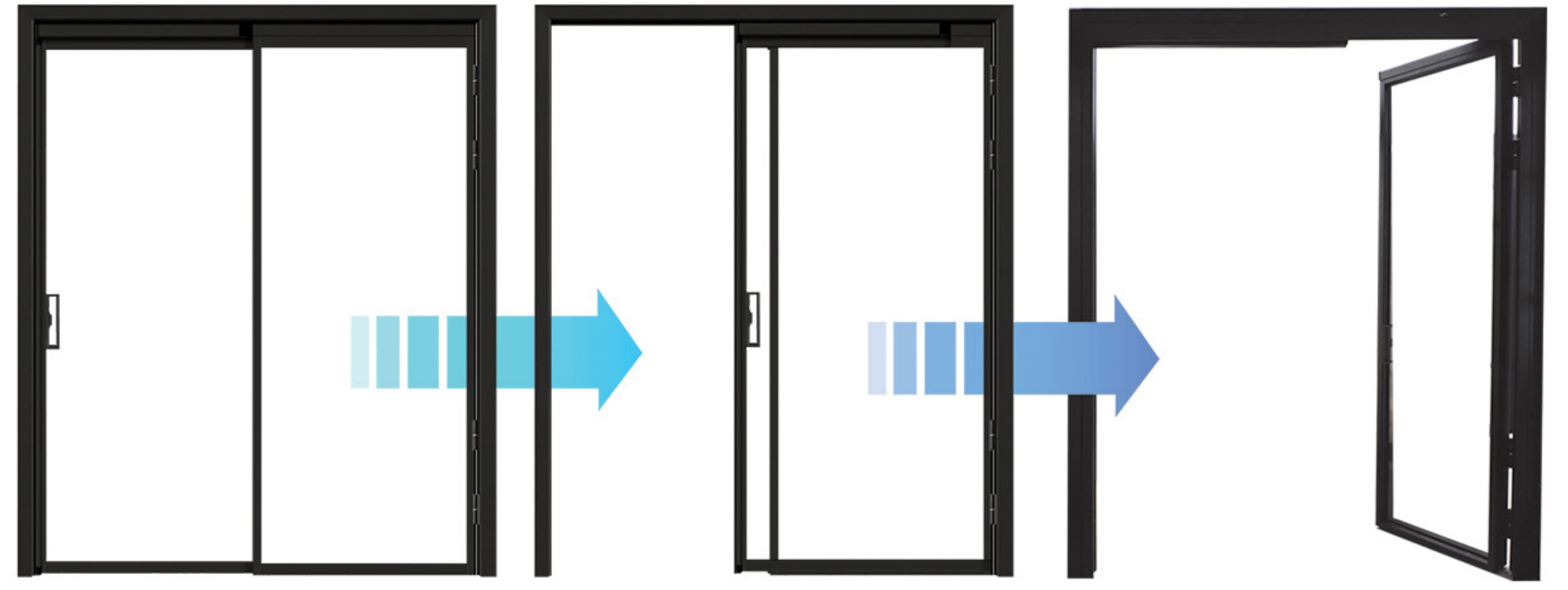
FULLY OPEN SPACE





# PD Door

CUSTOMER GALLERY



LIVING AREA



YARD AREA





YARD AREA

## L-SHAPE PD DOOR



DIVIDING HALL AREA



DIVIDING HALL AREA